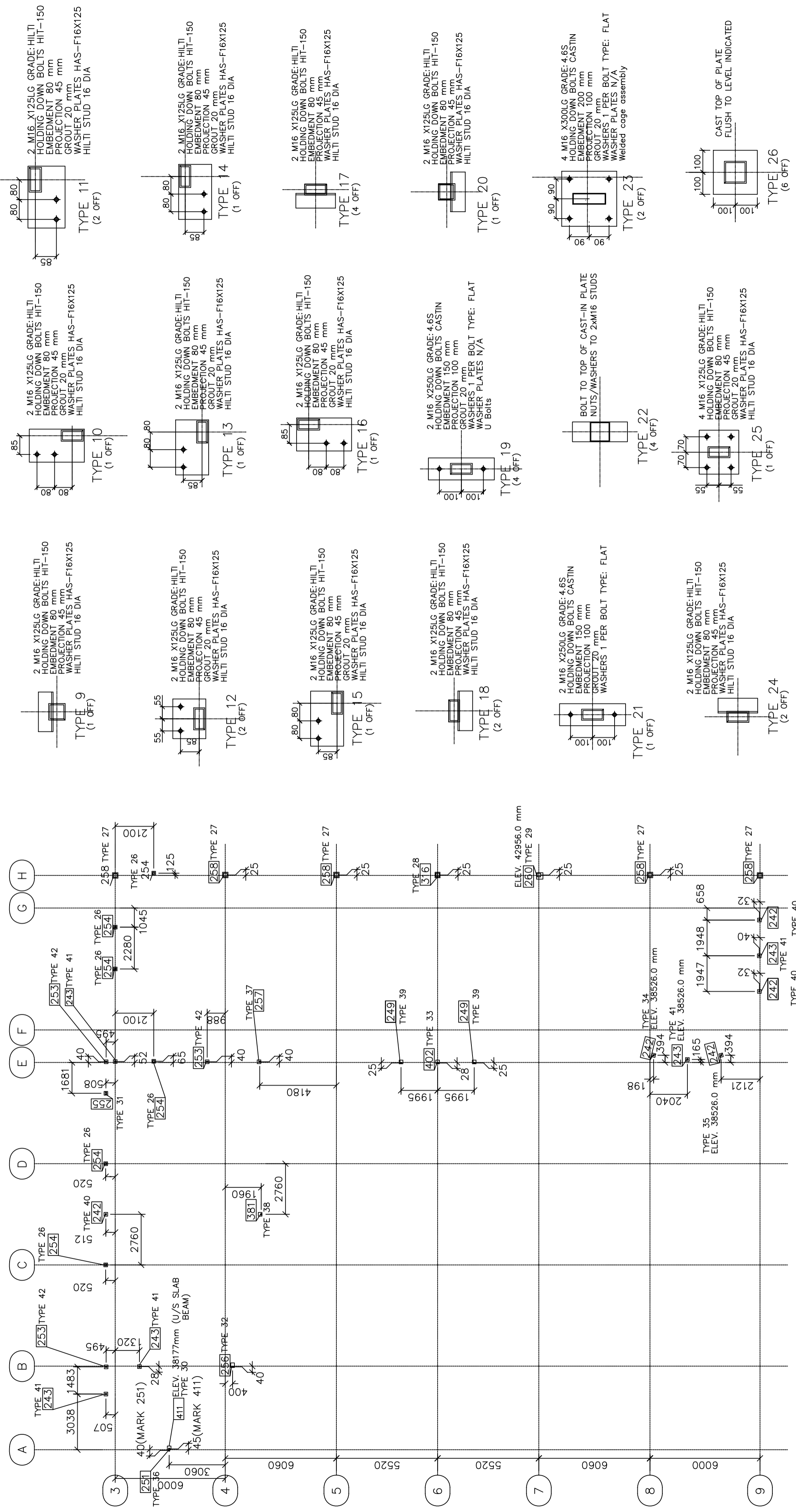


BASEMENT & GROUND FLOOR : TOP OF FOOTING / SLAB 35006 EXCEPT AS NOTED



FIRST FLOOR : TOP OF FOOTING/SLAB 38606 EXCEPT AS NOTED

TOP OF FOOTING 41165 EXCEPT AS NOTED

		CLIENT: XXXX
UNIT 3/2 - MELGIE ROAD - MALAGA - WA 6060 PH : (08)9248 6519 FAX : (08)9248 7198		PROJECT: IONA PRESENTATION COLLEGE NEW SPORTS CENTRE PALMERSTON ST. MOSMAN PARK
REV	SCALE	JOB NUMBER
0	NTS	XXXX
DRAWN BY:		DRAWING NUMBER
DATE:		GA1

STRUCAD